



COURTYARD
BUCHAREST FLOREASCA



HOTEL

Hotel building is a newly constructed modern block with special exterior architectural design. It has 13 floors and features attractive city views from the top ones.

HOTEL LOCATION & DISTANCE TO HOTEL

Hotel is located in business area of the city, surrounded by numerous office buildings, not far from spectacular King Michael I Park & Lake formerly Herastrau Park and Promenada Shopping Mall.



Airport (Henri Coanda International Airport) 14 km/15 min drive



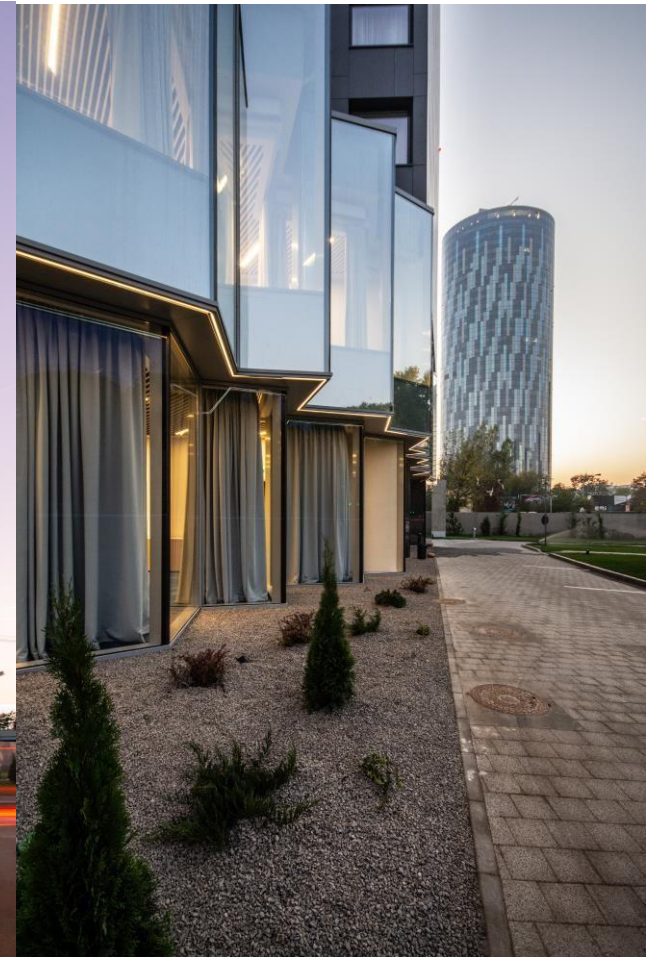
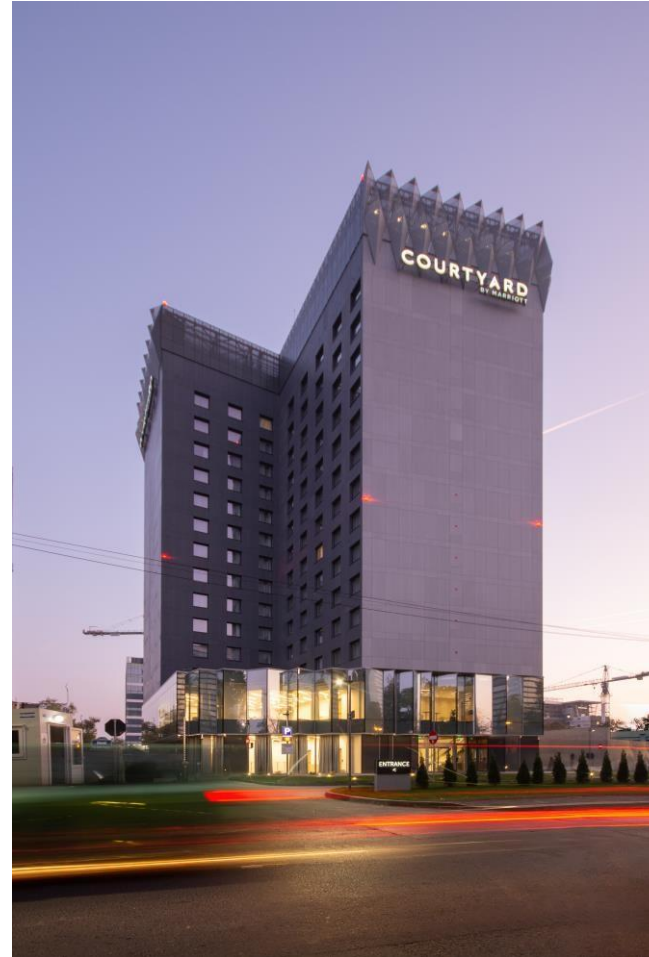
The hotel is situated 550 meters away from subway (Metro Aurel Vlaicu)



City center is 6 km/12min away by car or 10 min by public transportation



Central railway station – 5 km



HOTEL AT A GLANCE

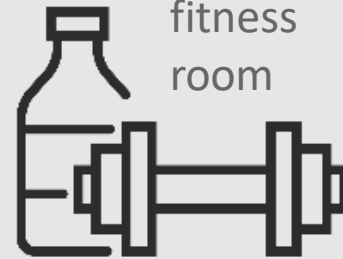
Hotel has:

259

SPACIOUS ROOMS,
CONVENIENT FOR
BUSINESS & LEISURE

7

MEETING ROOMS,
533 sqm and 280 sqm
prefunction area



fitness
room

24h shop The Market

24/7

P

direct access to the
underground
parking



RESTAURANT
TERRACE & LOBBY
BAR



Free WiFi



digital key



259

ROOMS

24 square meters





STANDARD KING

114

SUPERIOR ROOMS

80

STANDARD TWIN

59

ACCESSIBLE

6



7 MEETING ROOMS,
533 sqm and 280
sqm prefunction
area

Largest ballroom can hold
conference up to

200

people in theater style or
120 guest in banquet
dinner.

All meeting rooms can
take

538

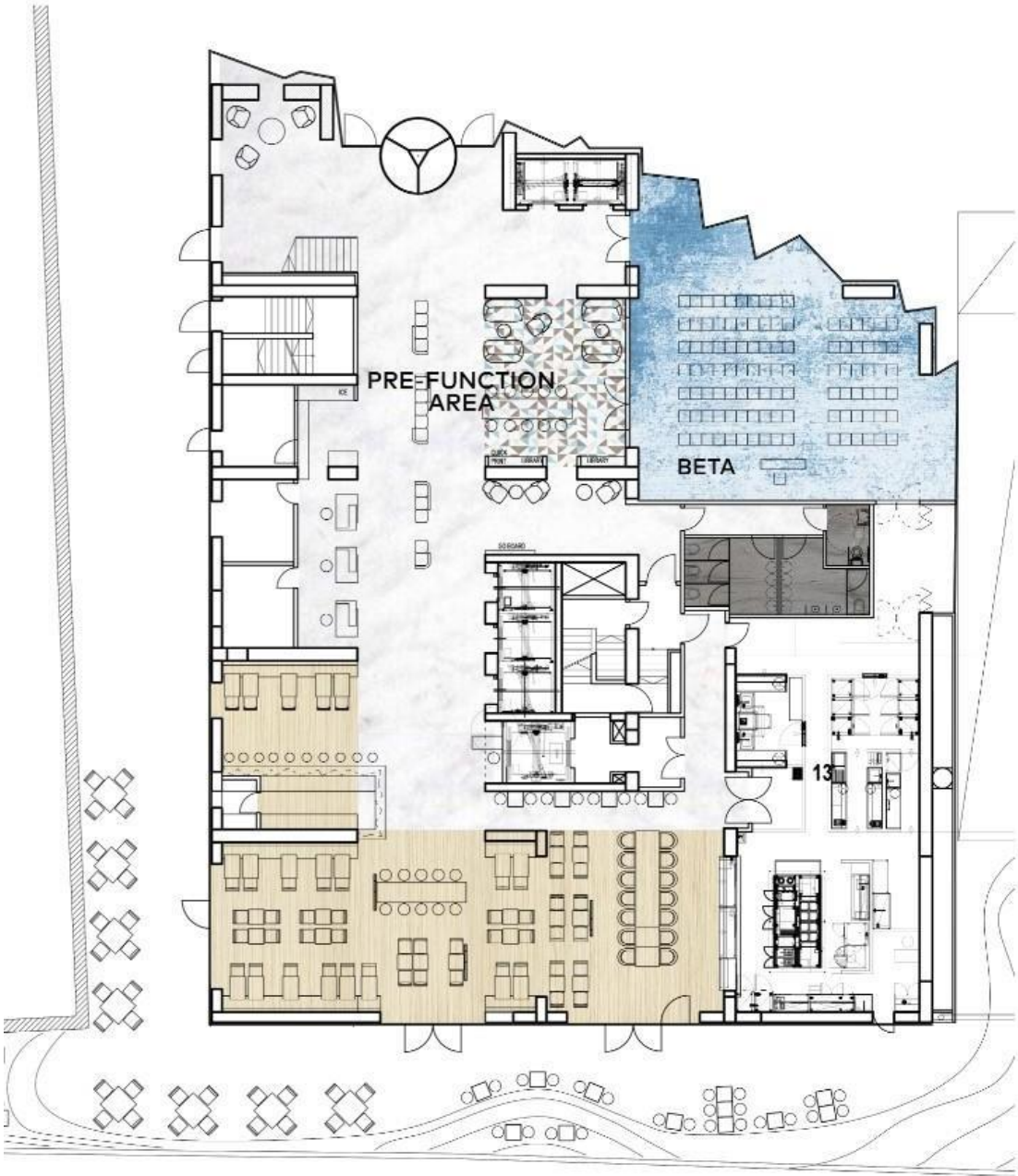
Delegates at once



CONFERENCE ROOMS CAPACITIES

Conference Facilities	m ²	Theater	Classroom	Cabaret	U-Shape	Boardroom	Cocktail	Banquet Dinner
Meeting Room Alfa	185	200	100	72	50	38	170	120
Meeting Room Beta	114	104	44	48	30	22	110	80
Meeting room Gamma	107	100	56	48	36	32	90	60
Meeting Room Delta	45	45	24	24	18	16	35	32
Meeting room Zeta	35	30	18	8	16	16	20	16
Meeting room Sigma	35	30	18	8	16	16	20	16
Meeting room Tau	12	8	N/A	N/A	N/A	6	N/A	10

Floor Plans



solt

D I N I N G

RESTAURANT



"Solt Dining" restaurant is a Premium Casual, all-day restaurant, driven by simplicity and best quality local produce. Restaurant concept basis is New Nordic Kitchen trends where local, natural and seasonal produce will be used in every single dish. Contemporary dishes will represent local cuisine through the best seasonal products. Restaurant concept allows flexibility for breakfast, business lunch and a la carte dinner. "Solt Dining" strives to meet expectations of local businessman and today's modern traveler.

LOBBY BAR

Lobby bar is an easy going and relaxing space with assortment of coffees during the day and lively lounge in the evening offering great selection of wines, craft beers and innovative list of cocktails. Market offers to guests freshly made packaged sandwiches, cold drinks, snacks, sweets and souvenirs.



OFFERS

Offering the most powerful portfolio in the industry, our 30 brands and more than 7,000 properties across 131 countries and territories give people more ways to connect, experience and expand their world.

MARRIOTT BONVOY EXCLUSIVE OFFERS



Earn 500 extra points per night
The longer you stay, the more you'll earn at the newly opened Courtyard Bucharest Floreasca hotel.

[SEE DETAILS](#)

LOYALTY Program

Wherever you're going, whatever you're doing, one program will bring you an unmatched collection of hotels and experiences.

MARRIOTT
BONVOY[™]

30

Brands

Across

131

Countries

More than

7000

Properties